

KB theatre  
COMPANY

ReCREATING  
the STAGE

*a roundtable for our new reality*

**ATTENDEE PACKET**

for more information

email: [info@KBTheatre.org](mailto:info@KBTheatre.org) | website: [KBTheatre.org](http://KBTheatre.org)

## **Re-Creating the Stage** *a roundtable for our new reality*

### **What is “Re-Creating the Stage?”**

Re-Creating the Stage is a digital summer program produced & organized by **K.B. Theater Company** members & collaborators, offered to the public free of charge. This program is predominantly aimed at undergraduate/graduate-level students or young industry professionals in the U.S. who have lost their internships, apprenticeships & summer work opportunities due to the COVID-19 crisis. Our program consists of panels of both up-and-coming & established industry professionals as well as 1hr. creative workshops centered around the collaborative nature of theater making & storytelling. Our program will begin on July 11th and run through August 15th, 2020. Anyone can sign up to gain access to our free events by visiting our website: <https://www.kbtheatre.org/re-creating-the-stage.html>

Thanks to an *Inclusivity Excellence Fellowship* awarded to our company members by the University of California, Irvine (UCI), our program also aims to collect qualitative & quantitative research in the areas of inclusivity & accessibility in educational & professional theater institutions by hosting various **Affinity Spaces** that will take place from July 11th – August 15th, 2020. These **Affinity Spaces** will be limited to 30 applicants who seek to be part of these “difficult” yet paramount conversations.

For more information on how to apply to our **Affinity Spaces** please visit our website or follow this link, where you will find our application at the bottom of the page: <https://www.kbtheatre.org/affinity-spaces.html>

### **K.B. Theatre Company Founders**

**Stephanie Carrillo**

*K.B. Artistic Director*

*StephanieCarrillo@kbtheatre.org*

**Jesús López Vargas**

*K.B. Managing Director*

*JELopez@kbtheatre.org*

**Merle DeWitt III**

*K.B. General Manager*

*MRDewitt@kbtheatre.org*

**Nancy Batres**

*K.B. Outreach Director*

*NBatres@kbtheatre.org*

## Schedule of Panels

### WEEK 1, PANEL #1 – **Acting & Performance**

*Saturday, July 11th | 1:30 – 2:30pm (PDT), 4:30 – 5:30pm (EDT)*

Category is: *Navigating Culture & Identity in Acting & Performance*

Panelists: **Terrell Donnell Sledge, Linedy Genao & Chris Mansa**

### WEEK 1, PANEL #2 – **Acting & Performance**

*Saturday, July 11th | 2:45 – 3:45pm (PDT), 5:45 – 6:45pm (EDT)*

Category is: *Creative Discipline & Training During COVID-19*

Panelists: **Elbert Joseph, Margaret Odette & LROD (Laura Rodriguez)**

### WEEK 2, PANEL #3 – **Theatre Directors**

*Saturday, July 18th | 1:30 – 3:00pm (PDT), 4:30 – 6:00pm (EDT)*

Category is: *Tokenization VS. Representation*

Panelists: **José Carrasquillo, Rebecca Rivas & Mei Ann Teo**

### WEEK 3, PANEL #4 – **Producers, Managers & Technicians**

*Saturday, July 25th | 1:30 – 3:00pm (PDT), 4:30 – 6:00pm (EDT)*

Category is: *Personal Finance & Self Sustainability in our Industry*

Panelists: **Michaela Bulkley, Veronica Hernandez & Ross Jackson**

### WEEK 4, PANEL #5 – **Producers & Leaders**

*Saturday, August 1st | 1:30 – 2:30pm (PDT), 4:30 – 5:30pm (EDT)*

Category is: *Producing for Social Change & Accountability*

Panelists: **Jeffrey Lo, Arpita Mukherjee & Víctor Élan Vázquez**

### WEEK 4, PANEL #6 – **Producers & Leaders**

*Saturday, August 1st | 2:45 – 3:45pm (PDT), 5:45 – 6:45pm (EDT)*

Category is: *Inciting Change; How to be a Leader in the Arts & in our Communities*

Panelists: **Patrice Amon & Armando Huipé**

### WEEK 5, PANEL #7 – **Projections, Lighting & Sound Designers**

*Saturday, August 1st | 1:30 – 2:30pm (PDT), 4:30 – 5:30pm (EDT)*

Category is: *Skills Learned by Practicing Design & How to Navigate the Freelance World*

Panelists: **Melanie Chen Cole, Sherrice Mojgani & David Murakami**

### WEEK 5, PANEL #8 – **Costume & Set Designers**

*Saturday, August 1st | 2:45 – 3:45pm (PDT), 5:45 – 6:45pm (EDT)*

Category is: *Challenging Stereotypes in the Design Process*

Panelists: **Valarie Sue Henry & Ramaj Jamar**

## Schedule of Workshops

### WEEK 6, WORKSHOP #1 – **Creative Collaboration**

*Saturday, August 15th | 1:30 – 2:30pm (PDT), 4:30 – 5:30pm (EDT)*

Category is: *Creative Collaboration & Devising New Stories*

Hosted by: **TBA, with Jesús López Vargas & Brandon Ray Alba**

### WEEK 6, WORKSHOP #2 – **The Art of Storytelling**

*Saturday, August 15th | 2:45 – 3:45pm (PDT), 5:45 – 6:45pm (EDT)*

Category is: *How to Share Difficult Subject Matter Through Art*

Hosted by: **Ryan Trecairtin, with Kezia Waters & Stephanie Carrillo**

## Schedule of Affinity Spaces

### WEEK 1, AFFINITY SPACE #1 – **The Latinx Community**

*Saturday, July 11th | 11:00am – 1:00pm (PDT), 2:00pm – 4:00pm (EDT)*

Category is: *Conversation with the Latinx Community*

Facilitators: **Roslyn Cecilia Sotero & Addys Maria Castillo**

### WEEK 1, AFFINITY SPACE #2 – **The Black Community**

*Saturday, July 18th | 11:00am – 1:00pm (PDT), 2:00pm – 4:00pm (EDT)*

Category is: *Conversation with the Black Community*

Facilitators: **Kezia Waters & Addys Maria Castillo**

### WEEK 1, AFFINITY SPACE #3 – **The Womxn / Fem Community**

*Saturday, July 25th | 11:00am – 1:00pm (PDT), 2:00pm – 4:00pm (EDT)*

Category is: *Conversation with the Womxn Community*

Facilitators: **Roslyn Cecilia Sotero & Stephanie Carrillo**

### WEEK 1, AFFINITY SPACE #4 – **The Asian & Pacific Islander Community**

*Saturday, August 1st | 11:00am – 1:00pm (PDT), 2:00pm – 4:00pm (EDT)*

Category is: *Conversation with the Asian & Pacific Islander Community*

Facilitators: **Kelley Ho & Elijah Punzal**

### WEEK 1, AFFINITY SPACE #1 – **The LGBTQIA+ Community**

*Saturday, August 8th | 11:00am – 1:00pm (PDT), 2:00pm – 4:00pm (EDT)*

Category is: *Conversation with the LGBTQIA+ Community*

Facilitators: **Ezra Anisman & Elijah Punzal**

A brief packet further explaining some of the topics to be discussed for our Affinity Spaces will be emailed out 48hrs. prior to each event to everyone that applies & is invited to attend.

## What are Affinity Spaces?

“Affinity Spaces” are virtual spaces for our young professionals & graduate students that were created in order to provide a safe & brave space for identity-based, community conversations. By safe & brave space, we mean that these spaces allow & encourage participants to authentically engage in meaningful & challenging conversations rooted in community building & social justice.

Please review the following goals of KB Theatre Company’s Affinity Spaces:

1. To host a safe space for people in the theater community who share similar backgrounds & experiences in order to speak amongst each other about specific topics regarding inclusion in educational institutions & professional workplaces.
2. To collect qualitative data - anonymously, in the form of open discussions - regarding how inclusion is sometimes “preached” but is not actively being implemented in our educational institutions & professional workplaces.
3. And most importantly, to have open discussions about which steps we believe must be taken to adequately improve inclusivity & accessibility within our communities.

**Please note that all Affinity Spaces are “closed spaces”, meaning that participants can only join an Affinity Space if they identify as part of that specific community.** This is an intentional choice in order to protect & respect the sanctity of the Affinity Spaces.

For more information on how to apply to our Affinity Spaces please visit our website or follow this link, where you will find our application at the bottom of the page:  
<https://www.kbtheatre.org/affinity-spaces.html>

### AFFINITY SPACES AGREEMENTS & GUIDELINES

We ask that you help us create a safe & brave atmosphere during these Affinity Spaces by respecting the following virtual community agreements & guidelines:

1. Respect the names & pronouns of the participants & the moderators
2. Respect the intentions of the space
3. Assume good intent from other’s statement & correct only with care
4. Use content warnings around sensitive content
5. Challenge the notion of a monolithic identity. Even in a community of shared identity, please understand & respect that everyone has different lived experiences
6. “Fill Space, Leave Space”. Be aware of your presence in & contributions to a conversation
7. Practice Online Etiquette. Please refrain from conducting, displaying, or verbalizing inappropriate behavior during the Affinity Spaces
8. Be gracious & patient in the event of technological issues.

*If you have any further questions on the Affinity Space guidelines, please contact Elijah Punzal at [EPunzal@KBTheatre.org](mailto:EPunzal@KBTheatre.org) or Jesús López at [JELopez@KBTheatre.org](mailto:JELopez@KBTheatre.org)*

## WEEK #1 | Panel #1 for Actors

### *Navigating Culture & Identity in Acting & Performance*

*Saturday, July 11th | 1:30-2:30pm (PDT) 4:30-5:30pm (EDT)*



#### **Linedy Genao, Actor**

Linedy Genao is grateful to KB Theatre Company for the opportunity to be on this panel. Broadway: *On Your Feet!* (Original Broadway cast) National Tour: *Dear Evan Hansen*. Regional: *Passing Through* (Goodspeed's Terris Theatre), *West Side Story* (Lyric Opera of Chicago, Barrington Stage), *Havana Music Hall* (Miami's Actors' Playhouse), *A Taste of Things to Come* (Chicago's Broadway Playhouse), *In The Heights* (Olney Theatre Center). Education: BA in Business Administration from UCONN. Con amor a mi familia, para siempre. IG/Twitter: @linedygenao

[nyc.blocagency.com/talent/legit/linedy-genao](http://nyc.blocagency.com/talent/legit/linedy-genao)



#### **Chris Mansa, Actor**

Chris Mansa is an actor living in Los Angeles. He received a Bachelor's of Fine Arts: Acting from Western Michigan University, and a Master's of Fine Arts: Acting from the University of California-Irvine. Chris has performed on-stage in several productions in regional theatres across the country and is now focusing his talents in film and television performance. He is excited to share his experience in hopes that it will provide some with clarity on the journey that is *Navigating Culture and Identity in Performance and Acting*.

[www.imdb.com/name/nm7034106](http://www.imdb.com/name/nm7034106)



#### **Terrell Donnell Sledge, Actor, Director & Writer**

Terrell Donnell Sledge is a professional actor, writer, educator and community advocate dedicated to socially conscious and meaningful artistry. Terrell holds undergraduate and graduate degrees from Yale and Brown Universities, respectively. He has performed at world renowned theatrical venues including the Actor's Theatre of Louisville's Humana Festival, the Eugene O'Neill Theatre Center, Hartford Stage Company, Cincinnati Playhouse in the Park, Alabama Shakespeare Festival, San Diego Repertory Theatre and many more. Terrell shares the skills and experience he acquired as a professionally trained artist through his work in support of cultural arts engagement, education, entertainment, and empowerment. Terrell has designed arts education programs and founded a creative arts driven organization, RE:ACT (Re-imagining and Elevating: Artistic Concepts and Talent), which incorporates creative expression and youth advocacy forums.

[www.terrelldonnellsledge.com](http://www.terrelldonnellsledge.com)



**WEEK #1 | Panel #2 for Actors & Performers**  
*Creative Discipline & Training During COVID-19*  
Saturday, July 11th | 2:45-3:45pm (PDT) 5:45-6:45pm (EDT)



**Elbert Joseph, Actor**

Elbert Joseph, known as EJ, is Deaf actor who is fluent in both American Sign Language as well as spoken English. He started acting when he was thirteen and his passion turned into a career. He has received professional theatrical training at the Boston Arts Academy and has worked with several award-winning theaters in the Boston area including American Repertory Theater, Huntington Theatre, and Wheelock Family Theatre. He believes success is found in collaboration, desire for personal growth and the constant pursuit of new opportunities. Inclusion for all, all for inclusion! In 2002 - 2003, he was nominated by the Independent Reviewers of New England (IRNE) for Best Supporting Actor for his performance as Louis in *The Trumpet of the Swan* at Wheelock Family Theatre and Special Recognition for his performance as Yeffim in *Uncle Vanya* at American Repertory Theater. In 2012, he was part of the IRNE recognition of Best Ensemble for *The Arabian Nights* at central Square Theater. In 2016, he was honored by the IRNE's with a Special Recognition for his performance as Tuc in *Suzan Zeder's Ware Trilogy: Mother Hicks, The Taste of Sunrise and The Edge of Peace*; performed over a three month period and produced on three separate stages by Emerson Stage, Wheelock Family Theatre, and Central Square Theatre. In 2019, he was IRNE nominated for Best Supporting role as Chorus in *Antigone* at Flat Earth Theatre.



**LROD, Performance Artist & Choreographer**

LROD is a Chicana from El Paso and the Tex-Mex borderlands who is recognized as a radical choreographer, performance artist, filmmaker, mask maker, and interdisciplinary pedagogue. LROD creates inclusive installations, surreal dance-works, and integrates emerging technology with care. Recognized as an interdisciplinary; LROD's current mediums intersect dance, performance, visual art, mask making, costume design, lighting, and interactive technologies.

Her movement research investigates contemporary lineages of Latinidad in dance, alter-egoism, and discovering communal environments of radical tenderness. LROD's films explore Latinidad in the context of borderland cultural production through the lens of surrealism, Chicanafuturism, and inter-generational archives.

[www.lrod.space](http://www.lrod.space)



**Margaret Odette, Actor**

Margaret Odette is a Haitian American actor from Harlem, NYC. She enjoys playing violin, learning new languages (currently working on Spanish), and has a unique capacity to micro-nap almost anywhere on the planet.

Margaret completed her MFA training at NYU Tisch Grad Acting. Along the way, her first feature film, *Sleeping with Other People*, debuted at Sundance and screened at Tribeca Film Festival; and she trained at the British American Dramatic Academy in Oxford, England. Margaret co-founded Homebase Theatre Collective, a community of playwrights, directors, and actors from Juilliard and NYU Tisch.

[www.margaretodette.com](http://www.margaretodette.com)

**WEEK #2 | Panel #3 for Theater Directors**  
*Tokenization VS. Representation*  
Saturday, July 18th | 1:30-3:00pm (PDT) 4:30-6:00pm (EDT)



**José Carrasquillo, Director**

José Carrasquillo is a freelance director based in Washington, DC. He has worked in most venues in the region including GALA Hispanic Theatre, the Kennedy Center, Theater J, Studio Theatre, Round House Theatre, Woolly Mammoth, and Signature Theatre. He was the founding Artistic Director of Freedom Stage and is the former artistic director of The Group Theatre in Seattle. Most recently, José directed Dan O'Brien's *The Body of an American* at Theater J, and Octavio Solís *El Paso Blue* at GALA.

[www.howlround.com/commons/jose-carrasquillo](http://www.howlround.com/commons/jose-carrasquillo)



**Mei Ann Teo, Director**

Mei Ann Teo (she/they) is a queer immigrant from Singapore making theatre & film at the intersection of artistic/civic/ contemplative practice. As a director/devisor/dramaturg, she creates across genres, including music theatre, intermedial participatory work, reimagining classics, and documentary theatre. Teo's work has toured the U.S. and internationally including Belgium's Festival de Liege, Singapore Theatre Festival, Edinburgh International Fringe, M1 Singapore Fringe Festival, INFANT Experimental Theatre Festival in Novi Sad, Serbia, Beijing International Festival, Dumbo Arts Festival, and the Shanghai International Experimental Theatre Festival. She holds an MFA in Theatre Directing from Columbia University.

[www.meiannteo.com](http://www.meiannteo.com)



**Rebecca Rivas, Director**

Rebecca Rivas is the Program Director of the LatinX Theatre Project, as well as an Artistic Associate for TheatreSquared. She recently relocated to Fayetteville, AR from El Paso, TX where she was an Assistant Professor at UTEP. Select university directing credits include *Electricidad*, *Labyrinth of Desire*, *Esperanza Rising*, *Just Like Us*, and *Bless Me, Ultima*. She is the co-founder of El Paso's *Chican@/Latin@ Theatre Series*. Most recently, she directed T2's production of *Native Gardens*, and collaborated with LatinX Theatre Project to develop and devise staging for our play, *The Crossroads*. She has directed staged readings of *Then They Forgot About the Rest* at Stages Repertory Theatre in Houston and *The Many Deaths of Danny Rosales* at the Chamizal National Park Theatre.

[www.lxtp.org/people](http://www.lxtp.org/people)



**WEEK #3 | Panel #4 for Producers, Managers & Technicians**  
*Personal Finance & Self Sustainability in our Industry*  
Saturday, July 25th | 1:30-3:00pm (PDT) 4:30-6:00pm (EDT)



**Michaela Bulkley, Producer & Program Manager**

Michaela is unapologetically passionate about building the performing arts community and culture to be more sustainable. Her BA in Theatre Producing, Masters in Nonprofit Management, and experience in marketing and arts management, all perfectly align in her dream job of working at LA STAGE Alliance. She has been a designer, actor, stage manager, writer, and director but she loves administration and producing the most. She has also been a freelance event planner and social media strategist since 2014. To learn more about her adventures in arts admin follow her on Instagram: @michaela.bulkley

[www.michaelabulkley.com](http://www.michaelabulkley.com)



**Veronica Hernandez, Technician & Stage Artist**

Veronica (Vero) Hernandez graduated with a BFA in Technical and Scenic Design from the University of Texas at El Paso (UTEP). Vero was the head carpenter at UTEP while working towards her bachelor's degree and gained skills such as welding, budgeting, technical directing, etc. After obtaining her bachelor's, Vero used her acquired skills at Barrington Stage Company, Monomoy Theater in Massachusetts, and The Old Globe in California. Vero continues her career touring for Round Room as Head Carpenter where she oversees a group of technicians for Touring Kids Productions. While not touring, Vero works at local stages for El Paso Production Staffing Services setting up Touring Broadway Shows, concerts, and special events.

[www.verohernandez.weebly.com](http://www.verohernandez.weebly.com)



**Ross Jackson, Project & Stage Manager**

Ross Jackson is a proud New Orleans, LA native now living in Los Angeles, CA. Ross works as a stage manager with several theaters in Southern California including multiple credits with the Geffen Playhouse, LA Opera, LA Philharmonic, and others. Ross holds his Master of Fine Arts degree in Stage Management from UC, Irvine and is a member of the Actors' Equity and AGMA unions. He has a passion for increasing representation in the stage management field. He serves as a Western Vice Regional Representative for the Stage Managers' Association and also takes part in several equity and advocacy initiatives. Ross is happily engaged and owes much of his trajectory to the encouragement and motivation from his fiancé, Megan.

[stage-directions.com/all/issue/stage-management/brilliance-and-authenticity-stage-manager-ross-jackson](http://stage-directions.com/all/issue/stage-management/brilliance-and-authenticity-stage-manager-ross-jackson)

## WEEK #4 | Panel #5 for Leaders

*Producing for Social Change & Accountability*  
Saturday, August 1st | 1:30-2:30pm (PDT) 4:30-5:30pm (EDT)



### **Jeffrey Lo, Playwright & Director**

Jeffrey Lo is a Filipino-American playwright and director. He is the recipient of the 2014 Leigh Weimers Emerging Artist Award, the 2012 Emerging Artist Laureate by Arts Council Silicon Valley and Theatre Bay Area Director's TITAN Award. Selected directing credits include *Eurydice* at Palo Alto Players (TBA Awards finalist for Best Direction), and *Uncle Vanya* at the Pear Theatre (BATCC Award for Best Production). As a playwright, his plays have been produced and workshopped at The BindleStiff Studio, City Lights Theatre Company and Custom Made Theatre Company. He is the Casting Director at TheatreWorks Silicon Valley, a graduate of the Multicultural Arts Leadership Institute and a proud alumnus of UC Irvine.

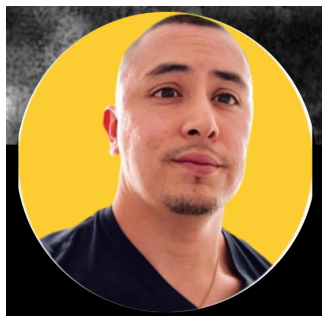
[www.jeffreywritesaplay.com](http://www.jeffreywritesaplay.com)



### **Arpita Mukherjee, Artistic Director**

Arpita Mukherjee is the Artistic Director of Congressional Award winning Hypokrit Theatre Company and the Festival Chair of Tamasha. Her recent directing credits include *Jump* by Charly Evon Simpson (APAC), *House of Joy* by Madhuri Shekar (San Diego Rep)Charly Evon Simpson, *Anonymouse* by Naomi Iizuka (Iowa State University), *Strange Men* by Will Snider (PlayPenn 2019), *Citizen Scientist* by CQ (Barrington Stage Company Playworks Weekend), and *Vietgone* by Qui Nguyen (reading Song Collective). Arpita has developed work at WP Theater, the Public Theater, and Ma-Yi Theatre amongst others. She is an alumni of the Lincoln Center Directors Lab.

[www.arpitamukherjee.squarespace.com](http://www.arpitamukherjee.squarespace.com)



### **Víctor Elán Vázquez, Casting Director**

Victor Vazquez, CSA is the founder of X Casting NYC. Current new-play projects include: *The Royal Court Theatre* in London's West End, *WP Theatre NYC Pipeline Festival*, and *TheatreWorks Silicon Valley*. Previously, he served as resident Casting Director at *Arena Stage* for three seasons, overseeing the casting of over 25 productions and over 26 new play/musical workshops. He has auditioned thousands of actors and cast over 400 actors in professional plays and musicals in such theatre's as *American Conservatory Theater San Francisco*, *Seattle Repertory Theatre*, *Kansas City Repertory Theatre*, and *London's West End*. He has held casting calls in New York, Los Angeles, and Washington D.C. Victor holds a master's degree from the University of Oxford. He is the proud son of Mexican immigrants. Spanish is his first language.

[www.xcastingnyc.com](http://www.xcastingnyc.com)

## WEEK #4 | Panel #6 for Leaders

### *Inciting Change;*

### *How to be a Leader in the Arts & in Our Communities*

*Saturday, August 1st | 2:45-3:45pm (PDT) 5:45-6:45pm (EDT)*



#### **Armando Huipe, Producer**

Armando Huipe is the producer of the national Latinx Theatre Commons, serving as their primary project manager and facilitator. They earned their MFA in Theatre Management at Yale School of Drama, where they served as Managing Director of Yale Cabaret, Assistant Managing Director of Yale Repertory Theatre, Chair of Diversity and Inclusion for the Graduate & Professional Student Senate, and a member of the Student Advisory Committee on Diversity and Inclusion to the Vice President and Secretary of Student Life at Yale University. Prior to Yale, they served as Administrative Coordinator at REDCAT (Roy and Edna Disney | CalArts Theatre) and a Development Associate at the Latino Theater Company.

[www.howlround.com/commons/armando-huipe](http://www.howlround.com/commons/armando-huipe)



#### **Patrice Amon, Producer & Director**

Dr. Maria Patrice Amon is a Latinx theatre scholar and artist. Maria Patrice has directed Tanya Saracho's *Fade* at Moxie Theatre, co-directed the NNPN RWP of Stephanie Allison Walker's *The Madres* at MOXIE Theatre, directed Octavio Solis' *Lydia* with Brown Bag Theatre Company, and directed staged readings with Amigos del Rep and *Breath of Fire* Latina Theatre Ensemble. Maria Patrice is the Executive Producer of Amigos del Rep; under her leadership, Amigos launched the Latinx New Play Festival at San Diego Repertory Theatre, produces a staged reading series, offers networking events with the Amigos del Rep general body, and produces special community engagement events that are based on current events and social needs. Additionally, Maria Patrice is a co-founder and co-Artistic Director of TuYo Theatre, a professional Latinx theatre in San Diego. Maria Patrice has a PhD in Drama from the University of California, Irvine with emphasis in Critical Theory and Chicano Studies and a Juris Doctorate from California Western School of Law. She is an assistant professor of Latinx theatre at CSU San Marcos.

[www.mariapatriceamon.com](http://www.mariapatriceamon.com)

**WEEK #5 | Panel #7 for Theater Designers**  
*The Skills Learned by Practicing Design &  
How to Navigate the Freelance World*  
Saturday, August 8th | 1:30-2:30pm (PDT) 4:30-5:30pm (EDT)



**Melanie Chen Cole, Sound Designer**

Melanie Chen Cole is a San Diego-based sound designer. Melanie has designed regionally for Alabama Shakespeare Festival, Dallas Theater Center, Indiana Repertory Theatre, La Jolla Playhouse, The Old Globe, PlayMakers Repertory Company, South Coast Rep, Studio Theatre, and Tantrum Theatre/Ohio University. In San Diego, she has worked with San Diego Rep, Cygnet Theatre, Diversionary Theatre, New Village Arts Theatre, North Coast Rep, Backyard Renaissance, Moxie Theatre, and ion theatre company. Melanie holds an M.F.A. in Sound Design for Theatre & Dance from UC San Diego.

[www.melaniesound.com](http://www.melaniesound.com)



**Sherrice Mojgani, Lighting Designer**

Sherrice Mojgani is a Washington D.C. based theatrical lighting designer. She has designed for Arena Stage, Signature Theatre, Seattle Repertory Theatre, The Old Globe, and San Diego Repertory Theatre. In 2019 Mrs. Mojgani's design for *Into the Woods* at Barrington Stage won a Berkshire Theatre Critics Circle Award. Mrs. Mojgani is a member of United Scenic Artist 829 and serves as Co-Chair on the USA 829 Diversity Committee. Mrs. Mojgani is an assistant professor in the School of Theatre at George Mason University. Originally from Orange County California, Mrs. Mojgani holds a BA in Theatre Arts from UC Santa Cruz, and an MFA in Lighting Design from UC San Diego.

[www.smojgani.com](http://www.smojgani.com)



**David Murakami, Projections Designer**

David Murakami is a projection designer and film director focused on the union between the cinematic and theatrical. Past designs include Opera Parallèle's *Dead Man Walking*, *Champion*, *Flight*, *Les Enfants Terribles*, and *Little Prince*; Sun Valley Summer Symphony's *Daphnis et Chloé*, the American premieres of *Anya 17* and *Heart of Darkness*; and the world premieres of Luis Valdez' *Valley of the Heart* and Jake Heggie's *Out of Darkness*. Other companies include Opéra de Montréal, San Jose Repertory Theater, Skylight Theatre, SFJazz, Alonzo King LINES Ballet, Arizona Opera, and LA Opera. Recent credits include the revival of *Zoot Suit* at the Mark Taper Forum, the sci-fi musical revue "5-SK1-E-S" aboard Princess Cruises, *Singin' in the Rain* with McCoy Rigby, and *Gordon Getty's Scare Pair* at the Kaye Playhouse in New York. David also teaches projection design at the UC Irvine.

[www.davidmurakami.com](http://www.davidmurakami.com)



**WEEK #5 | Panel #8 for Theater Designers**  
*Challenging Stereotypes in the Design Process*  
Saturday, August 8th | 2:45-3:45pm (PDT) 5:45-6:45pm (EDT)



**Ramaj Jamar, *Costume & Set Designer***

Ramaj Jamar is an American Scenographer for Film, Theatre and Dance. They won a Princess Grace Award for their costume designs in 2018 among other accolades for the art of storytelling. Ramaj, Houston native, is a proud graduate of the illustrious Texas Southern University (HBCU) where they received their B.A. in Theatre. They also received their M.F.A. in Design for Stage and Film at New York University. Their recent works include: A Funnyhouse of a Negro, The Death of the Last Black Man in the Whole Entire World, Bayano, Ma Rainey's Black Bottom and Zooman and the Sign to name a few. You may also know them for their costume illustrations for the Netflix mini-series When They See Us.

To learn more visit [Ramajjamar.com](http://Ramajjamar.com) or [@Ramaj\\_Jamar](https://www.instagram.com/Ramaj_Jamar).



**Valarie Sue Henry, *Costume Designer***

Valarie Sue Henry (She/They) is a freelance Costume Technician and Craftsperson based out of Brooklyn, NY. Specializing in women's clothing, she has constructed costumes and headpieces for Broadway, TV/film, theme parks, cruises, and drag queens. Valarie has recently opened her own shop, Valarie Sue Studio, on Etsy. Her shop features unique functional works of art, from hand-carved riverstone ashtrays, to individual statement pieces for any closet.

[www.etsy.com/shop/ValarieSueStudio?ref=shop\\_sugg](http://www.etsy.com/shop/ValarieSueStudio?ref=shop_sugg)

**ReCREATING**  
**the STAGE**  
*a roundtable for  
our new reality*

## Digital Conference Information

All of our panels & workshops will be hosted through Zoom. Our attendees will receive the meeting ID's and meeting links 24hrs. prior to each panel & workshop they are confirmed to attend. Only 100 active participants per meeting are allowed; all other attendees will enter the conference room as "viewers" only.

Any inappropriate behavior during our panels & workshops will not be tolerated. Note that any disrespectful /obscene language, "video bombing" or interruptions will cause that attendee to be removed & blocked from the room and they will not be allowed to participate in any further event produced by our company. Note that Zoom conferences automatically keep a record of all attendees.

### PANELS & WORKSHOPS

- Each of our panelists have received a list of topics & questions (picked by our attendees via our RSVP form) that will be discussed at our panels.
- Our panels will be recorded & shared with everyone who was unable to join us (or for anyone who had internet connection problems) for a period of 7 days after each panel. Workshops will not be recorded.
- We encourage all attendees to leave their video feed on throughout the panels and workshops as it helps our panelists, hosts, and moderators stay engaged with you.
- We also encourage you all to participate and speak to one another on the chat. We do ask, however, that you remain muted throughout the event.

**We also would like you to know that we are taking the following measures to promote the safety of our digital environment:**

1. An attendee RSVP form, through which individuals must provide us with their names and contact information in order to receive access to our events. Our panels are "available" to the public, but only made accessible by filling out this form.
2. Our panels will only be accessible through passwords that will be exclusively shared with those who filled out the RSVP form found on our website.
3. Two to three members of our team will attend each panel with the sole responsibility to remove any attendees who disrupt the process in any form.

*If you have any technical questions during the panels or workshops, please send them as "private" messages to the account named "**KB Assistance**" and they will get back to you as soon as possible.*



---

## K.B. THEATRE COMPANY | INFORMATION

K.B. is an arts group & creative producing collective founded in El Paso, TX in 2018 by Stephanie Carrillo, Jesús López Vargas, Merle DeWitt III & Nancy Batres.

The company aims to highlight & foster the talents of young artists from various communities. K.B. promotes interdisciplinary collaboration & innovation in new yet accessible processes & technologies.

### Our Mission

At K.B. Theatre Company we share stories that inspire and challenge our audiences, motivate and teach our artists, all while fostering a community of dedication, respect, and inclusion.

We focus on providing a safe & professional space for young & established artists of the performance arts to collaborate and experiment in their craft. Together we seek artistic excellence while nurturing accessibility within our communities.

K.B. Theatre was founded on love for our community & we are devoted to continuing helping it bloom.

### Core Values

**COLLABORATION** | At K.B. we believe in the power & importance of working together towards a common goal. K.B. Theatre defines collaboration as the ability of each team member to work & carry out a project while being a leader. Everyone in the room shares responsibility & ownership of the work. As a group of creative collaborators, we pride ourselves in telling well-rounded & essential stories that reflect this core value.

**DIVERSITY & INCLUSION** | K.B. Theatre acknowledges and celebrates the innate benefits of a group made up of diverse individuals. Various backgrounds, experiences & perspectives only strengthen our collective, and opinions & beliefs that challenge one another assure that our work is as full-rounded as possible. Recognizing the extreme need & constant lack of diversity & accountability in our industry brought by systematic oppressions, K.B. commits to actively & proudly represent the beauty of diversity within our leadership, our process, and our stories.

**COMMUNITY** | At K.B. we understand & respect the need for accessibility within our communities. It is our duty as storytellers to represent & respect each individual. We believe that theatre is a fundamental art form & storytelling method that everyone - regardless of economic or situational circumstances - should be able to access. We commit to actively work with our community members to find ways to promote accessibility.

## PROJECT STAFF & CONTACT INFORMATION

### Event Leadership

**Jesús López Vargas** | Producer, K.B. Managing Director  
For general queries regarding any of our summer events,  
accessability efforts or panelist information.  
[JELopez@kbtheatre.org](mailto:JELopez@kbtheatre.org) | (915) 702 3704

**Stephanie Carrillo** | Co-Producer, K.B. Artistic Director  
For creative queries regarding KB Theatre Company  
[StephanieCarrillo@kbtheatre.org](mailto:StephanieCarrillo@kbtheatre.org)

**Kezia Waters** | Co-Producer, K.B. Associate Theatre Director  
[KWaters@kbtheatre.org](mailto:KWaters@kbtheatre.org)

**Nancy Batres** | K.B. Outreach Director  
[NBatres@kbtheatre.org](mailto:NBatres@kbtheatre.org)

**Merle DeWitt III** | K.B. General Manager  
[MRDewitt@kbtheatre.org](mailto:MRDewitt@kbtheatre.org)



## PROJECT STAFF & CONTACT INFORMATION

### Event Leadership, Associates & Consultants

**Jessica Keasberry-Vnuk** | Associate Producer  
For queries regarding summer event attendee logistics  
*JLKeasberry@kbtheatre.org or jesskeasberry@gmail.com*

**Meghan Minguez-Marshall** | Assistant Producer  
For queries regarding summer event schedules  
*MMarshall@kbtheatre.org*

**Elijah Punzal** | Cultural Consultant  
For queries regarding our Affinity Spaces  
*EPunzal@kbtheatre.org*

**Brandon Ray Alba** | Associate Creative, K.B. Associate Movement Director  
*BRay@kbtheatre.org*

**Roslyn Cecilia** | Cultural Consultant & Facilitation Training  
*booking.rcecilia@gmail.com*

**Molly McHargue O'Donnell** | ASL/English Interpreter

**Rachel Judelson** | Certified ASL/English Interpreter

**Ezra Anisman** | Affinity Space Facilitator

**Addys Maria Castillo** | Affinity Space Facilitator

**Kelley Ho** | Affinity Space Facilitator

Website: ***KBTheatre.org***  
Instagram: ***@k.b.theatrecompany***  
Facebook: ***/KBTheatreCompany***

### **Our team would like to thank the following individuals for their contributions to our summer program:**

Jaymi Lee Smith, Lonnie Alcaraz, Julliette Carrillo, Georgina Hernandez, Jane Page & Don Hill.

And we would like to specially thank **Joel Veenstra** for his special contributions, attention & care to this project.

*"Re-Creating the Stage"* was made possible due to an *Inclusivity Excellence Fellowship* awarded in May, 2020 by the **University of California, Irvine** to KB's Managing Director - Jesús López Vargas

---

**KB** theatre  
COMPANY

---

**Always with love,  
always with care**

*-K.B. Family*

for more information

email: [info@KBTheatre.org](mailto:info@KBTheatre.org) | website: [KBTheatre.org](http://KBTheatre.org)

instagram: [@k.b.theatrecompany](https://www.instagram.com/k.b.theatrecompany) | facebook: [/KBTheatreCompany](https://www.facebook.com/KBTheatreCompany)