

PRESENTED BY
TRANSVERSAL THEATER COMPANY

Curie, Curie



Make-up Design Reference Packet

by Jesús López Vargas

INDEX

<i>pg. 1 & 2</i>	Jessica Dunn as <i>Marie Curie</i>
<i>pg. 3 & 4</i>	Jessica Emmanuel as <i>World</i>
<i>pg. 5</i>	Evan Lugo as <i>Pierre Curie</i>
<i>pg. 6</i>	Eyeshadow Palette Key for Jessica D. & Evan Lugo

Curie, Curie

Make-up Design

Performer: **Jessica Dunn**

Character: Marie Curie

Tools:

1. Angled Liner Brush
2. Eyeshadow Pointed Blending Brush
3. Blush Brush
4. Highlighter Brush
5. Foundation Brush or Sponge (*of performer's preference, optional*)

Makeup Products:

1. Warm/Brown Matte Eyeshadow (*slightly darker than the darkest strand of hair*)
2. Copper/Red Eyeshadow Shimmer (*to match hair color*)
3. Pearl Eyeshadow Shimmer (*near pearl white*)
4. Mascara (*brown preferred*) (*of performer's preference, optional*)
5. Warm Pink Blush
6. Pearl-Colored Highlight
7. Lip Color / Product (*of performer's preference, optional*)
8. Foundation or Concealer - non-transferable for costumes (*of performer's preference, optional*)
9. Setting Spray (*could be shared with other performers*)

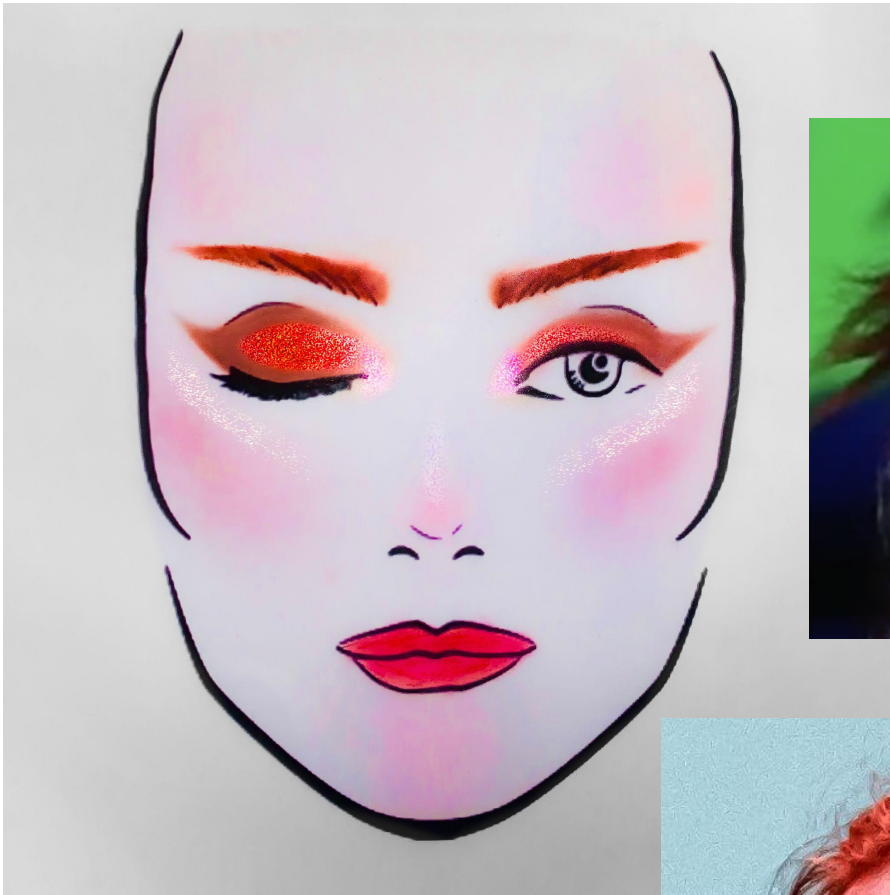
STEPS:

- A. Apply foundation as preferred, **optional**.
- B. Apply the 1) *warm/brown matte eyeshadow* as a wing using the 1) *angled liner brush*. Then curve it up the eye crease on the outermost $\frac{2}{3}$ of the eyelid. This will make the eye look bigger for the stage. You can blend it inwards into the eyelid, but the outer lines should be sharp.
- C. With your finger, apply the 2) *copper/red eyeshadow shimmer* to the lid of the eye. Use the 2) *eyeshadow pointed blending brush* to blend between the first color and this one if needed.
- D. With your finger, apply the 3) *pearl eyeshadow shimmer* to the inner corner of the eye and blend it into the copper color. Then drag this same color under the eyelid - only covering $\frac{1}{3}$ of the under eye.
- E. Fill in and elongate the eyebrows as needed with the same shadow and brush as step B.



STEPS (continued):

- F. Using the 3) *blush brush*, generously apply the 5) *warm pink blush* to the cheeks and into the temples, above the brow, the chin, and the tip of the nose. If it looks like too much, it will work for the stage.
- G. Using the 4) *highlighter brush*, apply the 6) *pearl-colored highlight* from the cheekbones up all the way to the ear/hairline. Also apply under the eyebrows and down the bridge of the nose, stopping at the tip before you hit the blush.
- H. Apply 7) *lipstick* as preferred, **optional**. Also apply 4) *mascara* as preferred, **optional**.
- I. The most important of all steps - apply the 9) *setting spray* generously over the entire face once finished. It will help the makeup last longer and stay in place.



Curie, Curie

Make-up Design

Performer: [Jessica Emmanuel](#)

Character: World

Tools:

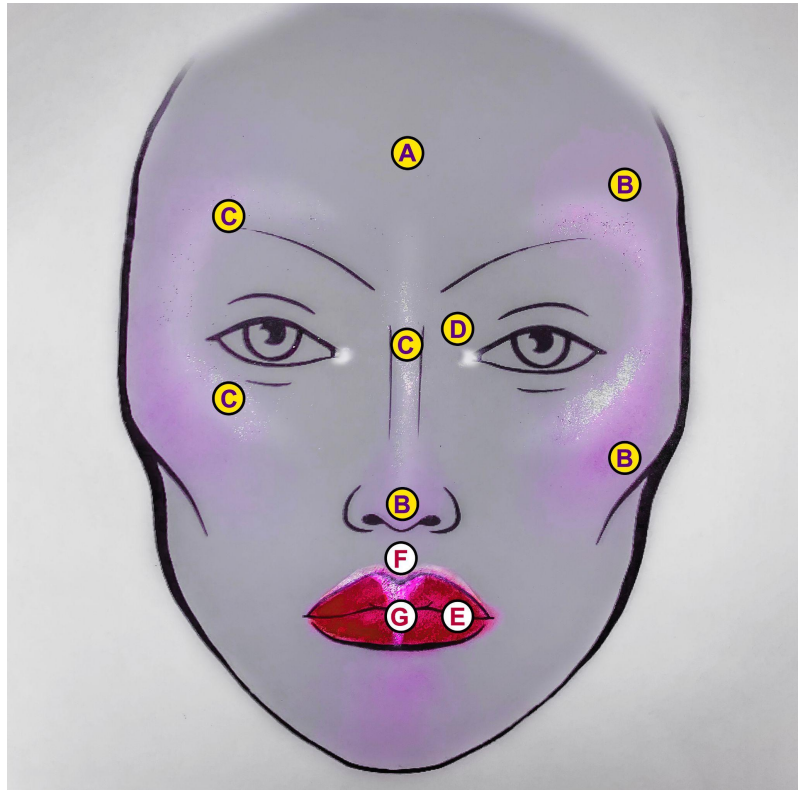
1. Blush Brush
2. Highlighter Brush
3. Foundation Brush or Sponge (*of performer's preference, optional*)

Makeup Products:

1. White Cream/Liquid Eyeliner
2. Mascara (*black preferred*)
3. Purple/Lilac Blush (*slight reflection preferred*)
4. Purple Highlighter
5. White/Translucent Cool-Toned Highlight Glitter (*preferably in liquid application*)
6. Plum/Red Cool-Toned Lipstick
7. Foundation or Concealer - non-transferable for costumes (*of performer's preference, optional*)
8. Setting Spray (*could be shared with other performers*)

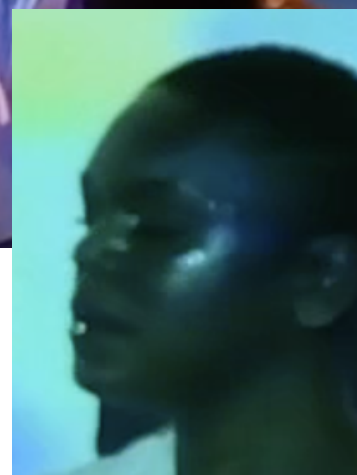
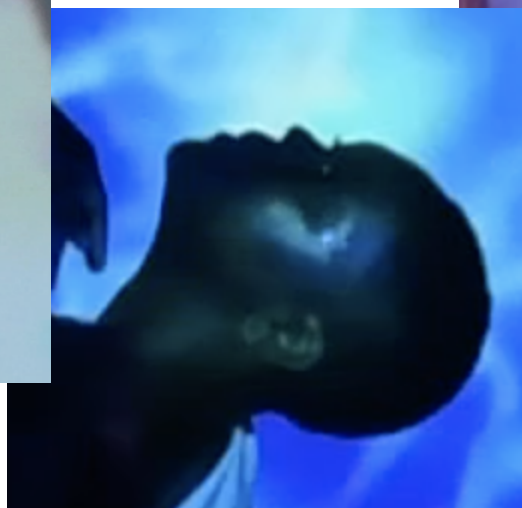
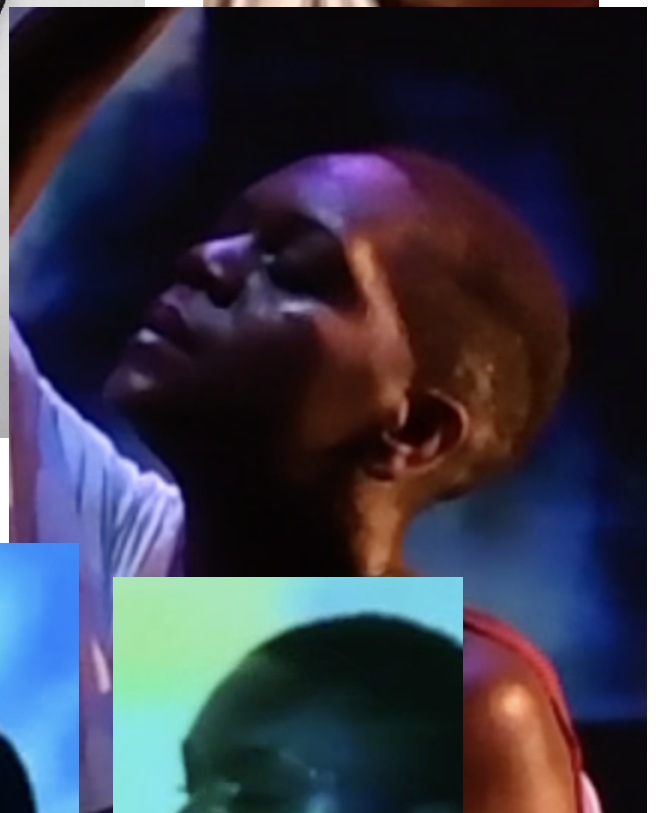
STEPS:

- A. Apply foundation as preferred, **optional**.
- B. Using the 1) *blush brush*, more than generously apply the 3) *purple/lilac blush* to the cheeks, the temples, above the brows, the chin, and the tip of the nose. If it looks like too much, it is *not* enough. Add more. Really. MORE. Cause theatre.
- C. Using the 2) *highlighter brush*, apply the 4) *purple highlighter* from the cheekbones up all the way up the temples and above the brows. Apply down the bridge of the nose, stopping at the tip and a bit on the chin. After this, use the 5) *white/translucent highlight glitter* to repeat the same steps, focusing mostly on the upper cheekbone, the top of the eyebrows, and the tip of the nose. **NOTE** (The 4) *purple highlighter* can also be applied to the exposed shoulder).
- D. Using the 1) *white cream eyeliner*, highlight the inner corner of the eyes with a large dot. Optional: you can line the waterline with this same product to make the eye appear larger on the stage.



STEPS (continued):

- E.** Apply the 6) *plum/red cool-toned lipstick*.
- F.** With the 1) *white cream eyeliner*, apply a white highlight above the center of the upper lip, in the shape of an M.
- G.** Using the 5) *white/translucent highlight glitter*, apply a line down the middle of the lips, and above the white highlight from step **F**. Also apply 2) *mascara* as preferred, **optional**.
- H.** The most important of all steps - apply the 8) *setting spray* generously over the entire face once finished. It will help the makeup last longer and stay in place.



Curie, Curie

Make-up Design

Performer: Evan Lugo

Character: Pierre Curie

Tools:

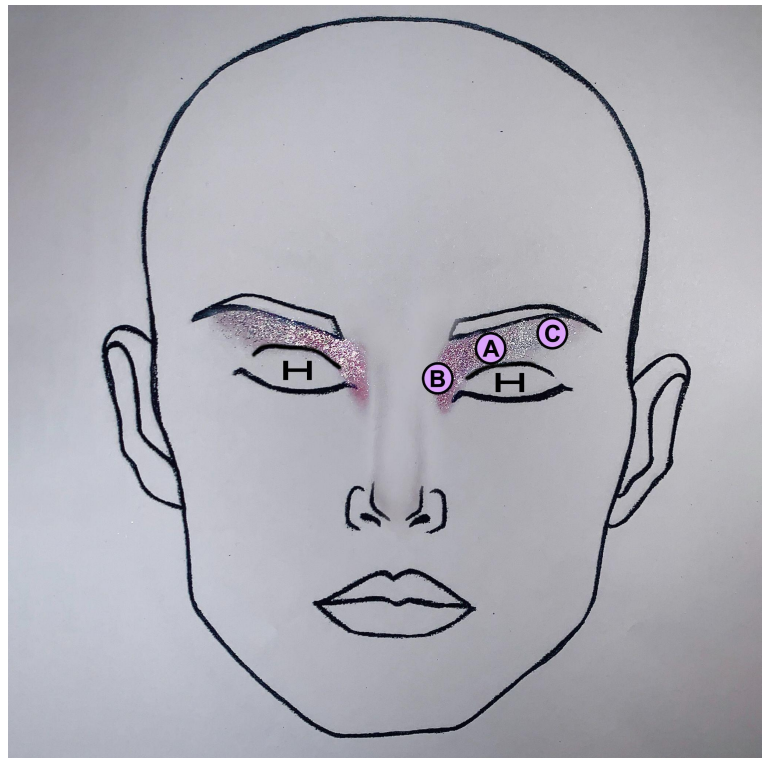
1. Eyeshadow Applicator Brush (*for details*)
2. Eyeshadow Primer Applicator Brush
3. Foundation Brush or Sponge (*of performer's preference, optional*)

Makeup Products:

1. Eyeshadow Primer (*or Glitter Adhesive *safe for the eyes*)
2. Purple Glimmer Eyeshadow
3. Silver Cool-Toned Glitter Eyeshadow
4. Mascara (*black preferred, optional*)
5. Pearl-Colored Highlight (*of performer's preference, optional*)
6. Foundation or Concealer - non-transferable for costumes (*of performer's preference, optional*)
7. Setting Spray (*could be shared with other performers*)

STEPS:

- 01.** Apply 6) *foundation* as preferred, **optional**.
- A.** Apply the 1) *eyeshadow primer/glitter adhesive* to the eyelid area shown on the image, from the inner corner, to under the eyebrow all the way to the end of the brow. You can use the 2) *eyeshadow primer applicator brush* or a finger for this step.
- B.** Apply the 2) *purple glimmer eyeshadow* to the innermost half of the eyelid, above the primer. You can use your finger or the 1) *eyeshadow applicator brush* for this step.
- C.** Apply the 3) *silver cool-toned glitter eyeshadow* above the last step, as well as all the way out under the brow to cover the rest of the primer. You can use your finger or the 1) *eyeshadow applicator brush* for this step.
- D.** Apply 4) *mascara* to the eyelashes (**optional**) and 5) *highlighter* (**optional**) to the top of the cheekbones and down the bridge of the nose.
- E.** The most important of all steps - apply the 7) *setting spray* generously over the entire face once finished. It will help the makeup last longer and stay in place.



Curie, Curie

Make-up Design - Eyeshadow Palette Key

Performer: **Jessica Dunn**

Character: Marie Curie

Performer: **Evan Lugo**

Character: Pierre Curie

JESSICA DUNN - TOO FACED, CHOCOLATE PALETTE

Combine both B) black & B) brown for the eyeliner, combine both C) fuschia & C) copper for the lid.



EVAN LUGO - ELF, EARTH & OCEAN PALETTE

